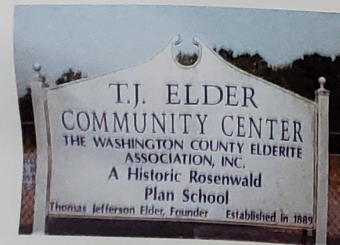


T. J. Elder Community Center

The T. J. Elder Community Center is on the site of the original Elder School. Cultural, academic and special activities are held here for the community. An auditorium with a stage provides space for concerts and other large group activities. There is one classroom/meeting room, kitchen, computer lab, and a museum with artifacts, archives and memorabilia of the Elder Schools.



About Us

The T.J. Elder Community Center is managed by The Washington County Elderite Association, Inc.

316 Hall Street

Post Office Box 6137

Sandersville, Georgia 31082

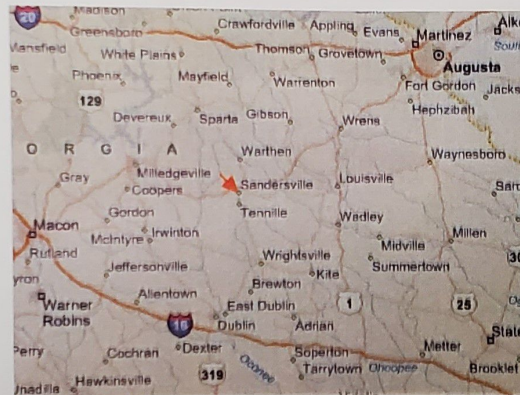
Telephone: 478-553-9050

Website: www.wacoelderite.com

Email: elderite@nctv.com

Membership is open to all alumni and supporters who embrace the Thomas Jefferson Elder Legacy.

Map and Directions



From Interstate-20 Exit # 138
South on GA Highway 15
55 minutes

From Interstate-16 Exit # 71
North East on GA Highway 15
45 minutes

From Interstate-75 Exit # 165
Then Exit 1A-Spring Street GA
Highway 49, East on GA Highway 22
To Milledgeville then go East on Highway
24 to Sandersville
1 hour 15 minutes

Thomas Jefferson Elder Community Center

316 Hall Street

Sandersville, Georgia 31082



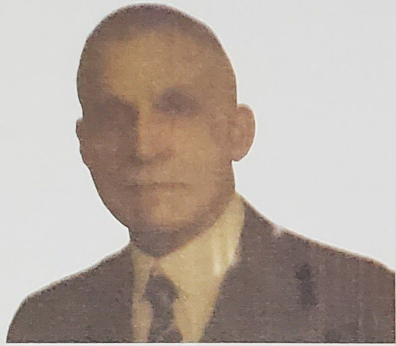
Formerly...

***The T. J. Elder High
and
Industrial School
1889-1959***

***The T. J. Elder Elementary
and High School
1959-1970***

***Professor Thomas Jefferson Elder,
Founder***

Professor Thomas Jefferson Elder



Professor Elder was born in Oconee County, Georgia. He hardly knew his mother because she lived away in the home for whom she worked. She left him and his only brother with other people. They attended Knox Institute in Athens when they were youngsters. He states in his biography that Mr. John Meeks, a white man provided for them after his mother died. He cared for them for several years in Athens and later in Atlanta they worked and saved their money and were able to attend Fisk University. He later attend Morgan Park Military School and Cook County Normal in Chicago.

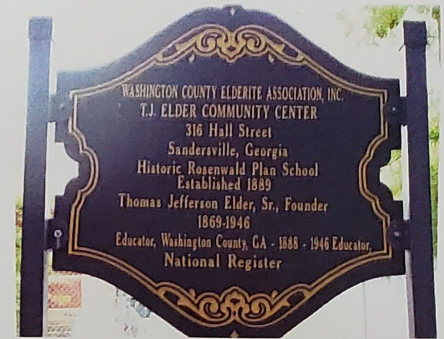
Professor Elder came to Washington County in 1888 at the invitation of a Preacher to take charge of a Washington County School. After two years he built a school which was named the Sandersville High & Industrial School and was later renamed the Thomas Jefferson Elder High and Industrial School.

Evolution of the Elder Schools

Education for Negroes within Sandersville began in Springfield Baptist Church. A year or so later, Professor Elder, with a small group of students, founded the Sandersville High & Industrial School. With indomitable insight of Professor Elder and the assistance of his wife Mrs. Lillian Phinizy Elder, this school became the symbol of intellectual attainment of many citizens as well as people of the surrounding communities. The Elder School has occupied three different sites.

From 1891-1950 the school on Hall Street contained grades 1-11. There was no graduating class in 1951 because the curriculum was being developed for 12th grade. The first class of twelfth graders to graduate was in 1952. On January 21, 1959, the school moved to a new building on Hines Street that housed grades Fifth through Twelfth, while Kindergarten through Fourth remained at the original site. Both facilities retained the name of T. J. Elder. After the integration of schools in 1970 the Hines Street school became T. J. Elder Middle School, and the original building on Hall Street became T. J. Elder Primary School.

A Rosenwald Plan School



The Rosenwald Plan Schools were named for philanthropist, Julius Rosenwald. Through his work with educator Booker T. Washington, he established a charitable fund to assist communities in building schools for black children in the rural south. He intended for schools receiving grant assistance to serve as a model of a modern school architectural designs. Most of the Rosenwald Plan Schools have an "H" design.

The Thomas Jefferson Elder School was built with the "H" design, following the stipulation of Rosenwald that the grant funds be matched by the people in the community.

